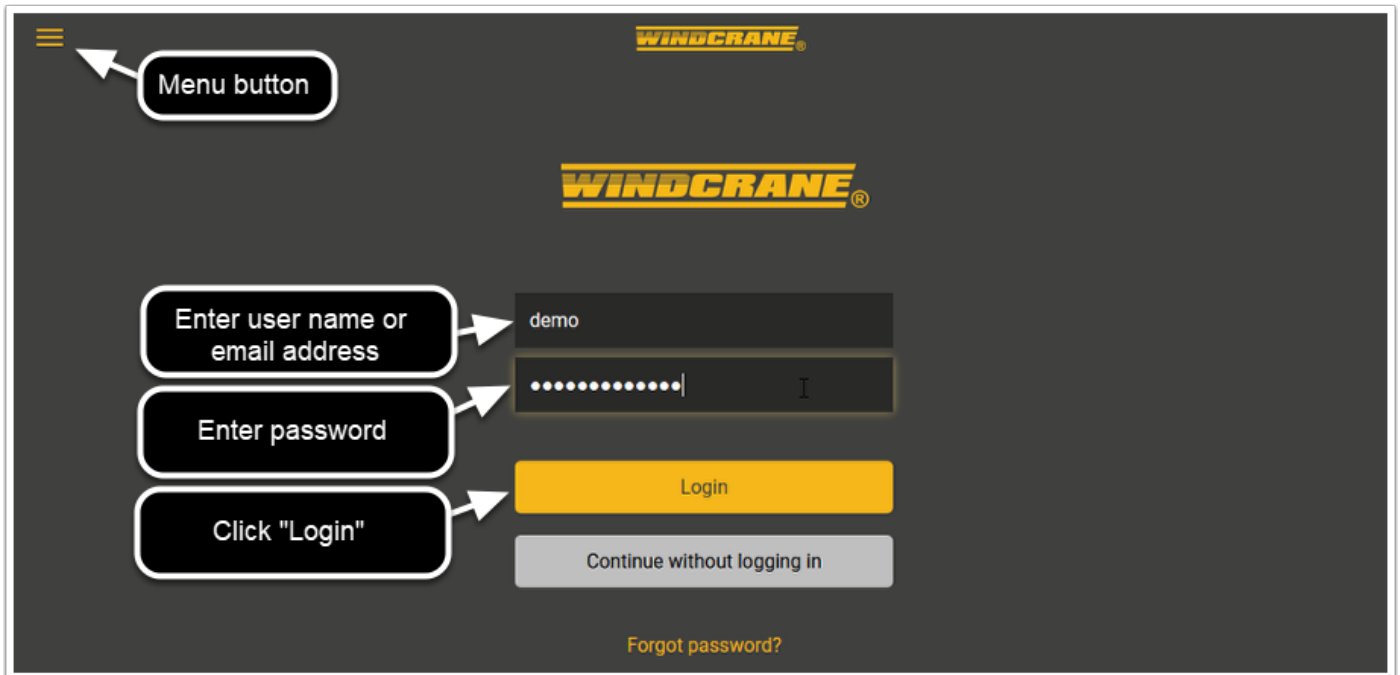


# WINDCRANE Fleet Dashboard Wind Reports

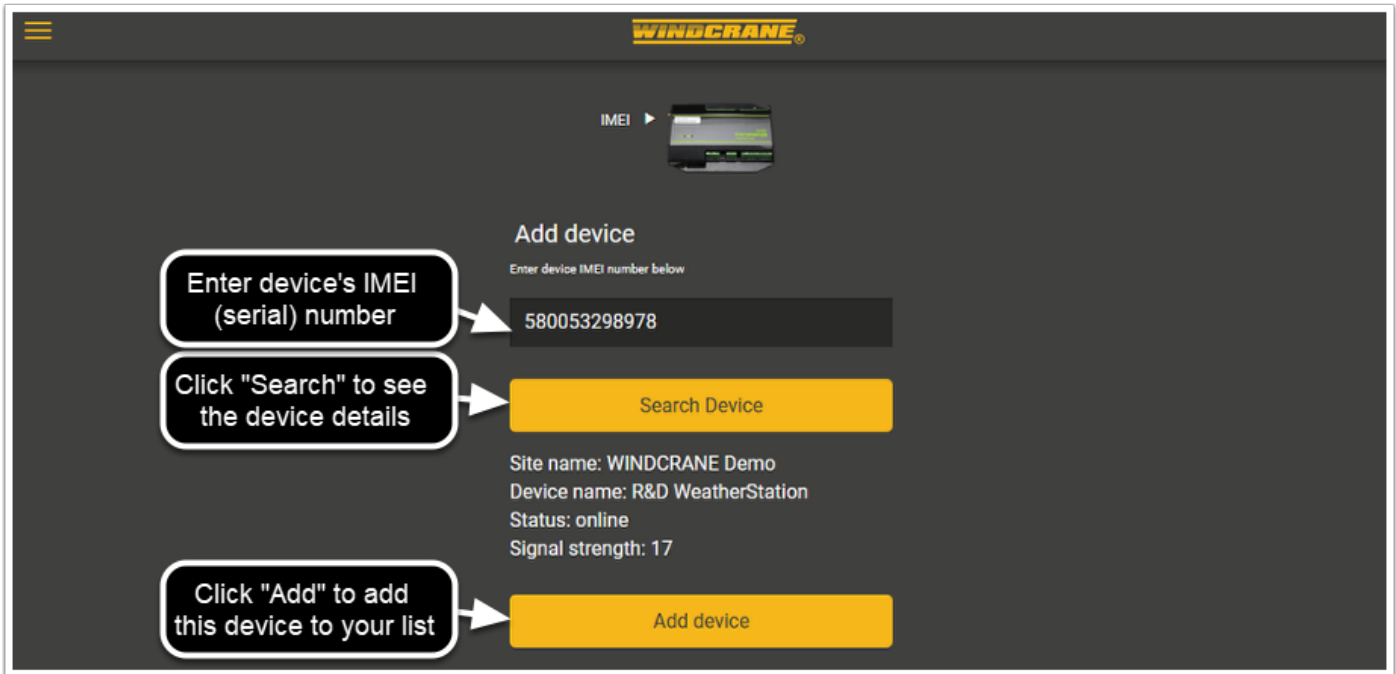
## Log in to the Fleet Dashboard

- Log in to the WINDCRANE fleet dashboard at <http://fleet.windcrane.com> using your supplied user name and password.
- If you have an account but cannot remember the login details, click the "Forgot password" link below the login form to get a reminder/reset email.



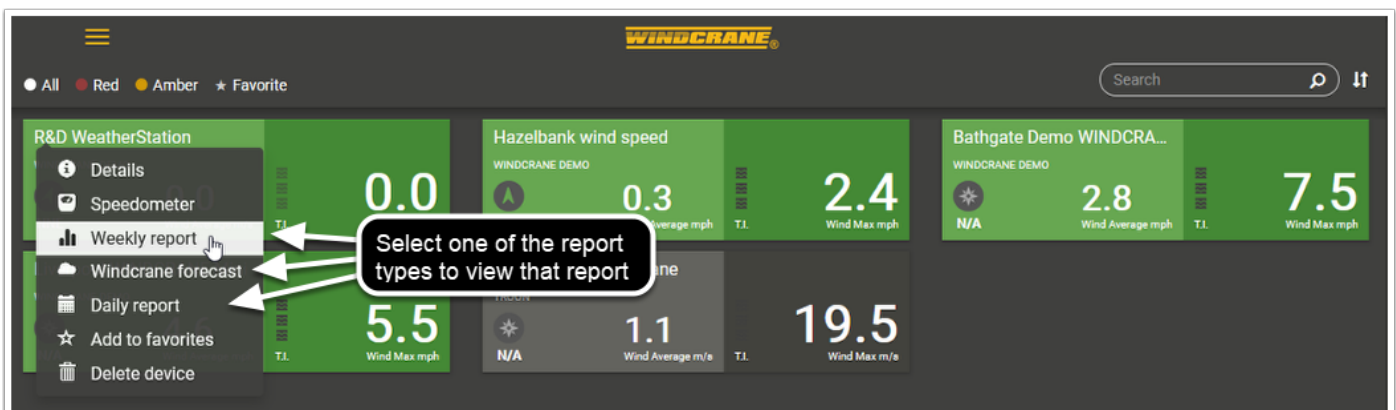
## Add WINDCRANE devices if necessary

- If you have not yet added any devices to your dashboard, then the "Add device" is displayed after login.
- If you need to add a new device, then click on the menu "hamburger" at top-left of the page, and select "Add device"



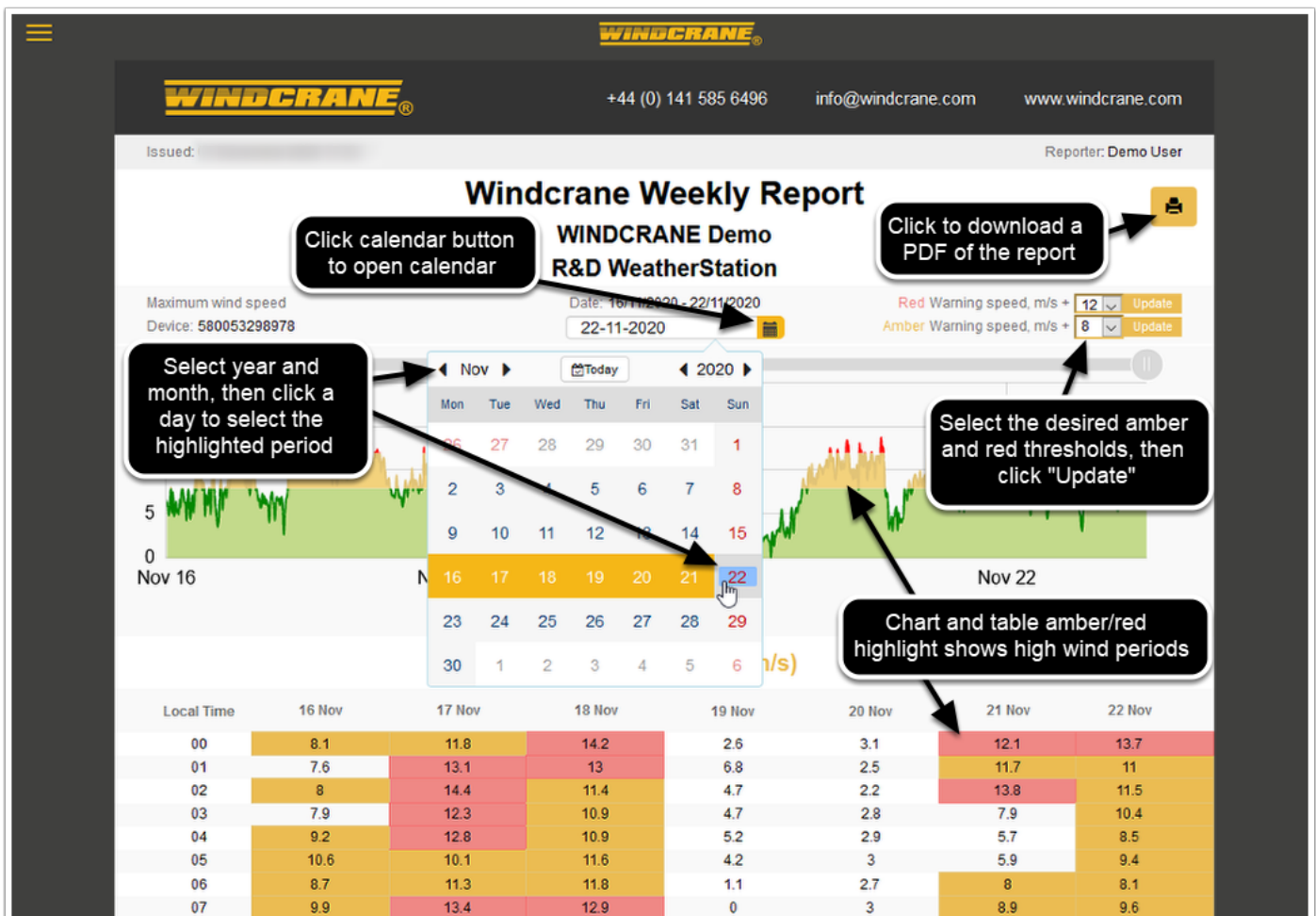
## Select a WINDCRANE device and report type

- Click on the left side of the desired device tile to pop up the menu, then select the desired report type (weekly, daily or forecast)



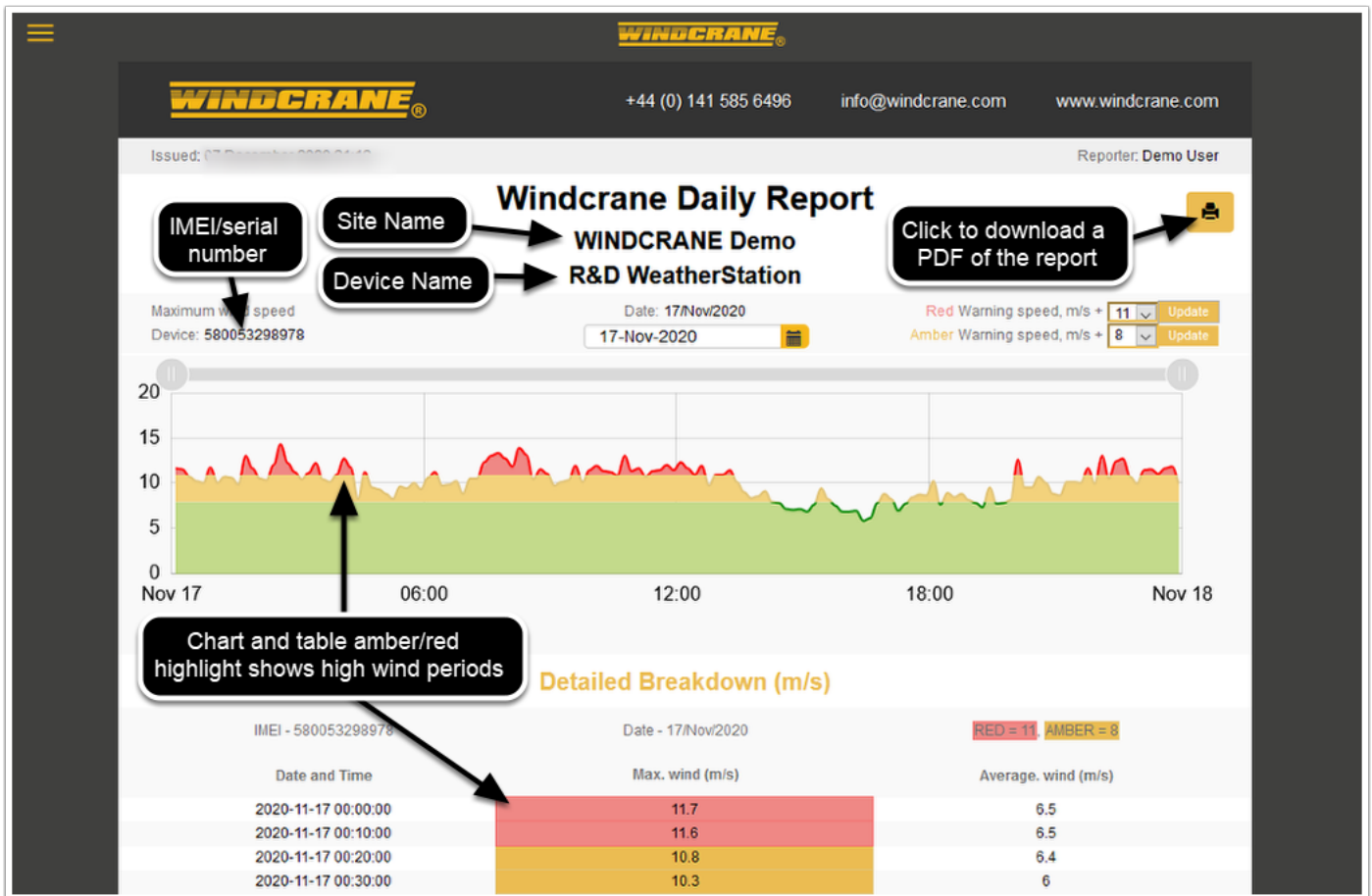
## Weekly Report: 7-day colour-coded chart and summary table

- The report initially shows the previous 7 days. Select any 7 day period using the date picker, and the report will update.
- You can adjust the red/amber colour coding using the threshold selectors on the right and then clicking "Update".
- The chart shows the wind gust speed in typically 10-minute intervals. Move your mouse cursor over the chart to see the value at the cursor position.
- The table below shows hourly max gust values and statistics for each day.
- Click the printer icon to download a PDF that you can print or email.
- Click your browser's Back button to return to the device list (or click the hamburger menu at top-left and select "List devices")



# Daily Report: 24-hour colour-coded chart and summary table

- Similar to the Weekly Report, use the calendar button to select a day, and the report will update.
- Adjust the amber/red thresholds if necessary. The initial values are the defaults for your WINDCRANE customer group, and match the app alert settings.
- The chart shows the wind gust speed in typically 10-minute intervals. Move your mouse cursor over the chart to see the value at the cursor position.
- The table below shows typically 10-minute interval gust values and statistics for each day.
- Click the printer icon to download a PDF that you can print or email.
- Click your browser's Back button to return to the device list (or click the hamburger menu at top-left and select "List devices")



# Forecast Report: 7-day forecast for WINDCRANE device's location

- The Wind Forecast gives a 7-day forecast for the WINDCRANE device's location, derived from global meteorological weather forecast services.
- As for the daily/weekly reports, adjust the amber/red thresholds if necessary. The initial values are the defaults for your WINDCRANE customer group, and match the app alert settings.
- The forecast values can be adjusted for height above ground, to better match a crane or structure height. Select a height and click "Update". Forecasts are typically for ground level. This tool uses the EN 13000 method to estimate the speed at the selected height.
- The chart shows the expected wind gust speed in 1-hour intervals. Move your mouse cursor over the chart to see the value at the cursor position.
- The table below shows the hourly gust values and statistics for each day, colour-coded according to the alert thresholds.
- Click the printer icon to download a PDF that you can print or email.
- Click your browser's Back button to return to the device list (or click the hamburger menu at top-left and select "List devices")

